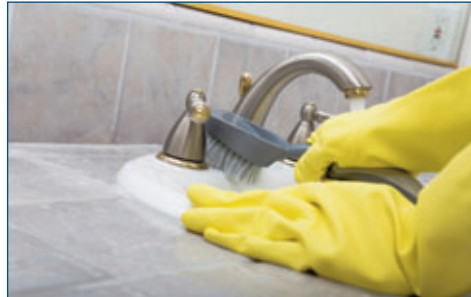
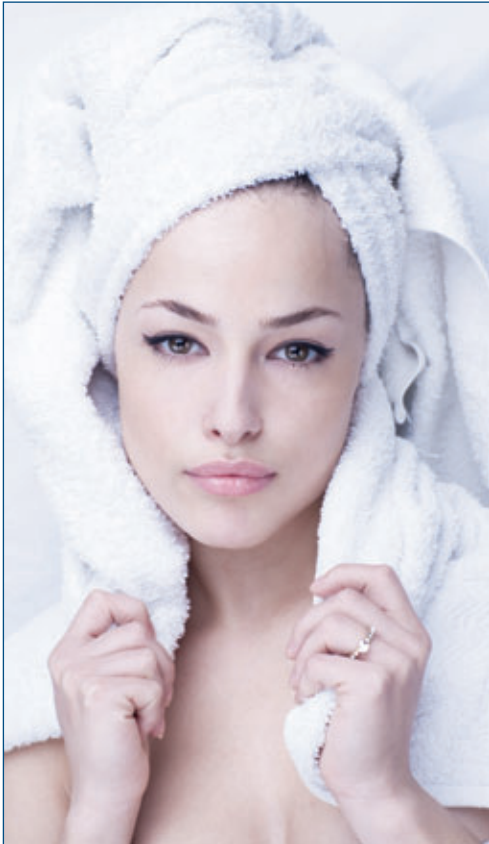


# CLEANER, SMARTER, BETTER ... SOFT WATER



## THE TROUBLE WITH HARD WATER

Hard water (calcium & magnesium) is a common problem for many homeowners and businesses. When hardness minerals are combined with heat it forms troublesome scale. Scale causes costly build-up in your plumbing, water heater and other water using appliances. When combined with soap, the minerals form soap curd or scum that makes skin dry and itchy, hair lifeless, laundry dull and builds up on fixtures.



## YOU DESERVE THE MANY BENEFITS OF SOFT WATER

- Silky shiny hair
- Soft supple skin
- Crystal clear dishes & glassware
- Bright whites, vibrant colours
- Easier cleaning
- Use up to 75% less soap
- Lower water heating cost by 29%
- Protect plumbing & appliances
- Extend life of laundry
- Save money

*IWT 565 Water Softener*



# IWT 565 SERIES WATER SOFTENER



## Features:

- Exclusive NSF Certified electronic control valve with reliable piston, seal and spacer technology
- Cabinet or Twin Tank models
- Lifetime Warranty on NSF Certified fiberglass tanks; 7 years on valve
- Rotating “No-touch” diagnostic LCD display showing time and date, capacity, volume remaining, regeneration time, last regeneration date, current flow rate & peak flow rate
- Meter Immediate, Meter Delayed, Meter with Day Override, Vacation and Calendar Clock mode
- Adjustable cycle times
- Tank jackets reduce condensation problems. Standard on 8", 9" and 10" models
- Brine safety valve provides extra overflow protection
- Plastic salt grid prevents salt bridging
- Unique bypass with an integrated space saving turbine meter and sample port on the inlet. One-piece design avoids meter jamming
- Time saving quick connect fittings on bypass and brine line. Powercord even has quick connect for easy valve spin on.
- Drain line o-ring eliminates need for Teflon
- NSF Certified fiberglass tanks / WQA approved resin

Item #	Model	System Capacity Grains			Flow Rate		Regeneration Water Usage (Gallons)		Mineral Tank Size	Resin Cu. Ft.	Brine Tank / Cabinet Size Inches	Salt Capacity (Lbs)	Ship Weight (Lbs)
		@ 10 lbs/cu ft	@ 6 lbs/cu ft (Factory Setting)	@ 3 lbs/cu ft	Service USGPM	Backwash USGPM	Clean Water (Factory Setting)	Problem Water					
15010007	IWT565-75	21,000	<b>18,750</b>	11,550	8.0	1.5	<b>29.5</b>	37.0	8 x 44	0.75	15.0 x 15.0 x 34.7	230	105
15010008	IWT565-100	28,000	<b>25,000</b>	15,400	10.0	2.0	<b>38.0</b>	48.0	9 x 48	1.00	15.0 x 15.0 x 34.7	230	122
15010009	IWT565-150	42,000	<b>37,500</b>	23,100	12.0	2.4	<b>48.5</b>	60.5	10 x 54	1.50	15.0 x 15.0 x 34.7	230	155
15010010	IWT565-200	56,000	<b>50,000</b>	30,800	15.0	3.5	<b>80.5</b>	95.5	12 x 52	2.00	20.3 x 37.4	385	158
15010024	IWT565-250	70,000	<b>62,500</b>	38,500	15.0	4.0	<b>92.5</b>	112.5	13 X 54	2.50	20.3 x 37.4	385	198
15010019	IWT565-300	84,000	<b>75,000</b>	46,200	15.0	5.0	<b>116.5</b>	141.5	14 x 65	3.00	23.0 x 35.0	550	244
15010011	IWT565-75C	21,000	<b>18,750</b>	11,550	8.0	2.0	<b>29.5</b>	37.0	9 x 35	0.75	13.8 x 23.6 x 43.3	225	93
15010012	IWT565-100C	28,000	<b>25,000</b>	15,400	10.0	2.4	<b>38.0</b>	48.0	10 x 35	1.00	13.8 x 23.6 x 43.3	225	110

- Voltage 12V/60Hz (120V to 12V wall mount transformer included)
- Pipe Size 3/4"
- Max Water Temp = 110°F (43°C)

- Max Operating Pressure = 100 PSIG (689 kPa)
- At stated service flow rates the pressure drop through these devices will not exceed 15 PSIG
- Do not use where microbiologically unsafe

Manufactured by:



Canature USA Inc. (Golden Valley, MN);  
Canature North America Inc.  
(Regina, SK; Kitchener, ON)  
[www.iwtwater.com](http://www.iwtwater.com)

Your Local Water Professional: