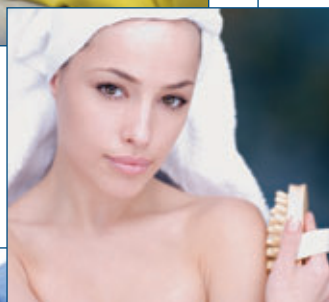
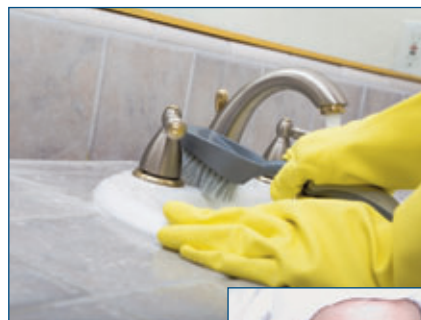


CLEANER, SMARTER, BETTER ... SOFT WATER



THE TROUBLE WITH HARD WATER

Hard water (calcium & magnesium) is a common problem for many homeowners and businesses. When hardness minerals are combined with heat it forms troublesome scale. Scale causes costly build-up in your plumbing, water heater and other water using appliances. When combined with soap, the minerals form soap curd or scum that makes skin dry and itchy, hair lifeless, laundry dull and builds up on fixtures.



IWT 165 Water Softener

YOU DESERVE THE MANY BENEFITS OF SOFT WATER

- Silky shiny hair
- Soft supple skin
- Crystal clear dishes & glassware
- Bright whites, vibrant colours
- Easier cleaning
- Use up to 75% less soap
- Lower water heating cost by 29%
- Protect plumbing & appliances
- Extend life of laundry
- Save money



IWT 165 SERIES WATER SOFTENER



Features:

- Exclusive NSF Certified electronic control valve with reliable piston, seal and spacer technology
- Cabinet or Twin Tank models
- Manually index to cycle position for easier and faster installation and service
- 10 Year Warranty on NSF Certified fibreglass tanks; 5 years on valve
- User friendly LCD display shows time of day, regeneration mode and gallons remaining
- 48 hours memory back-up
- Meter Immediate, Meter Delayed, Meter with Day Override and Calendar Clock mode
- Adjustable cycle times
- Brine safety valve provides extra overflow protection
- Plastic salt grid prevents salt bridging
- Unique bypass with an integrated space saving turbine meter and sample port on the inlet. One-piece design avoids meter jamming
- Time saving quick connect fittings on bypass and brine line. Powercord even has quick connect for easy valve spin on.
- Drain line o-ring eliminates need for Teflon
- NSF Certified fibreglass tanks / WQA approved resin

Item #	Model	Capacity Grains			Flow Rate		Mineral Tank Size	Resin Cu. Ft.	Brine Tank / Cabinet Size Inches	Salt Cap Lbs	Shipping Weight Lbs
		@ 10 lbs/cu ft	@ 6 lbs/cu ft (Factory Setting)	@ 3 lbs/cu ft	Service USGPM	Backwash USGPM					
15010020	IWT165-75	19,875	16,500	10,500	8.0	1.5	8 x 44	0.75	15.0 x 15.0 x 34.7	230	93
15010021	IWT165-100	26,500	22,000	14,000	10.0	2.0	9 x 48	1.00	15.0 x 15.0 x 34.7	230	110
15010022	IWT165-150	39,750	33,000	21,000	12.0	2.4	10 x 54	1.50	15.0 x 15.0 x 34.7	230	141
15010023	IWT165-200	53,000	44,000	28,000	15.0	3.0	12 x 52	2.00	20.3 x 37.4	385	158
15010025	IWT165-250	66,250	55,000	35,000	15.0	4.0	13x54	2.50	20.3 x 37.4	385	198
15010026	IWT165-300	79,500	66,000	42,000	15.0	5.0	14x65	3.00	23.0 x 35.0	550	244
15010027	IWT165-75C	19,875	16,500	10,500	8.0	2.0	9 x 35	0.75	13.8 x 23.6 x 43.3	225	93
15010028	IWT165-100C	26,500	22,000	14,000	10.0	2.4	10 x 35	1.00	13.8 x 23.6 x 43.3	225	110

- Voltage 12V/60Hz (120V to 12V wall mount transformer included)
- Pipe Size 3/4"
- Max Water Temp = 110°F (43°C)

- Max Operating Pressure = 100 PSIG (689 kPa)
- At stated service flow rates the pressure drop through these devices will not exceed 15 PSIG
- Do not use where microbiologically unsafe

Manufactured by:



Canature USA Inc. (Golden Valley, MN);
Canature North America Inc.
(Regina, SK; Kitchener, ON)
www.iwtwater.com

Your Local Water Professional: